

RURAL COMMUNITIES DEPEND ON HARVEST WORKERS WHO ON AVERAGE CREATE AND SUSTAIN THREE TO FOUR PERMANENT YEAR-ROUND JOBS.



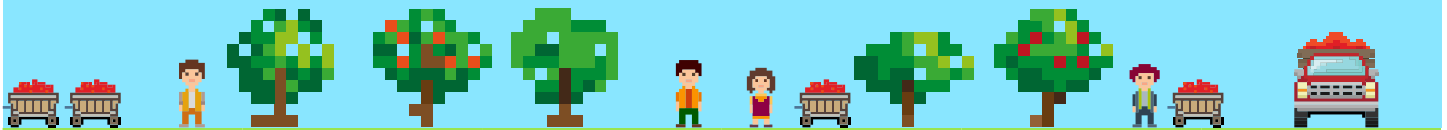
29 BILLION

APPLES HARVESTED IN THE U.S. LAST YEAR

PICKING FRUIT IS PHYSICALLY DEMANDING AND REQUIRES SKILL AND EXPERIENCE.

320 MILLION

AVERAGE NUMBER OF APPLES PICKED EACH DAY DURING HARVEST



EACH YEAR, THE U.S. APPLE INDUSTRY IS RESPONSIBLE FOR

\$21 BILLION



IN TOTAL ECONOMIC OUTPUT, \$13 BILLION OF WHICH IS DIRECTLY TIED TO U.S. APPLE OPERATIONS.

AGRICULTURAL LABOR SHORTAGES CAN IMPACT THE ECONOMIC WELL-BEING OF RURAL COMMUNITIES AND LEADS TO FOOD WASTE AND FEWER PRODUCE CHOICES FOR CONSUMERS. UPDATES TO AGRICULTURE LABOR POLICIES, LIKE THE FARM WORKFORCE MODERNIZATION ACT, COULD MEAN THE DIFFERENCE BETWEEN FAMILY-OWNED BUSINESSES STAYING IN BUSINESS OR NOT. CONGRESS MUST ACT SO THAT WE CAN SUSTAIN A DOMESTIC APPLE INDUSTRY IN THE YEARS TO COME.



TELL YOUR SENATORS, THE TIME TO ACT IS NOW. BIPARTISAN AGRICULTURAL LABOR REFORMS ARE NEEDED TO SUSTAIN OUR DOMESTIC APPLE INDUSTRY.
USAPPLEQUEST.COM

Disclaimer: While efforts have been made to ensure the accuracy and reliability of the information contained in this report, all information in this report is provided by the U.S. Apple Association (USApple) "as-is", with no guarantee of completeness, accuracy, or timeliness and without warranty of any kind, expressed or implied by USApple. Use of such information is voluntary, and reliance on it should only be undertaken after an independent review of its accuracy, completeness, and applicability.

Sources: U.S. Apple Association; U.S. Bureau of Economic Analysis; U.S. Bureau of Labor Statistics; U.S. Department of Agriculture: National Agricultural Statistics Service

NOTES: DATA ARE CURRENT AS OF 2019 EXCEPT ACREAGE (2017).

LEARN MORE AT usapple.org/economicimpact